



Killingbeck and Seacroft Neighbourhood Improvement Plan 2013/14

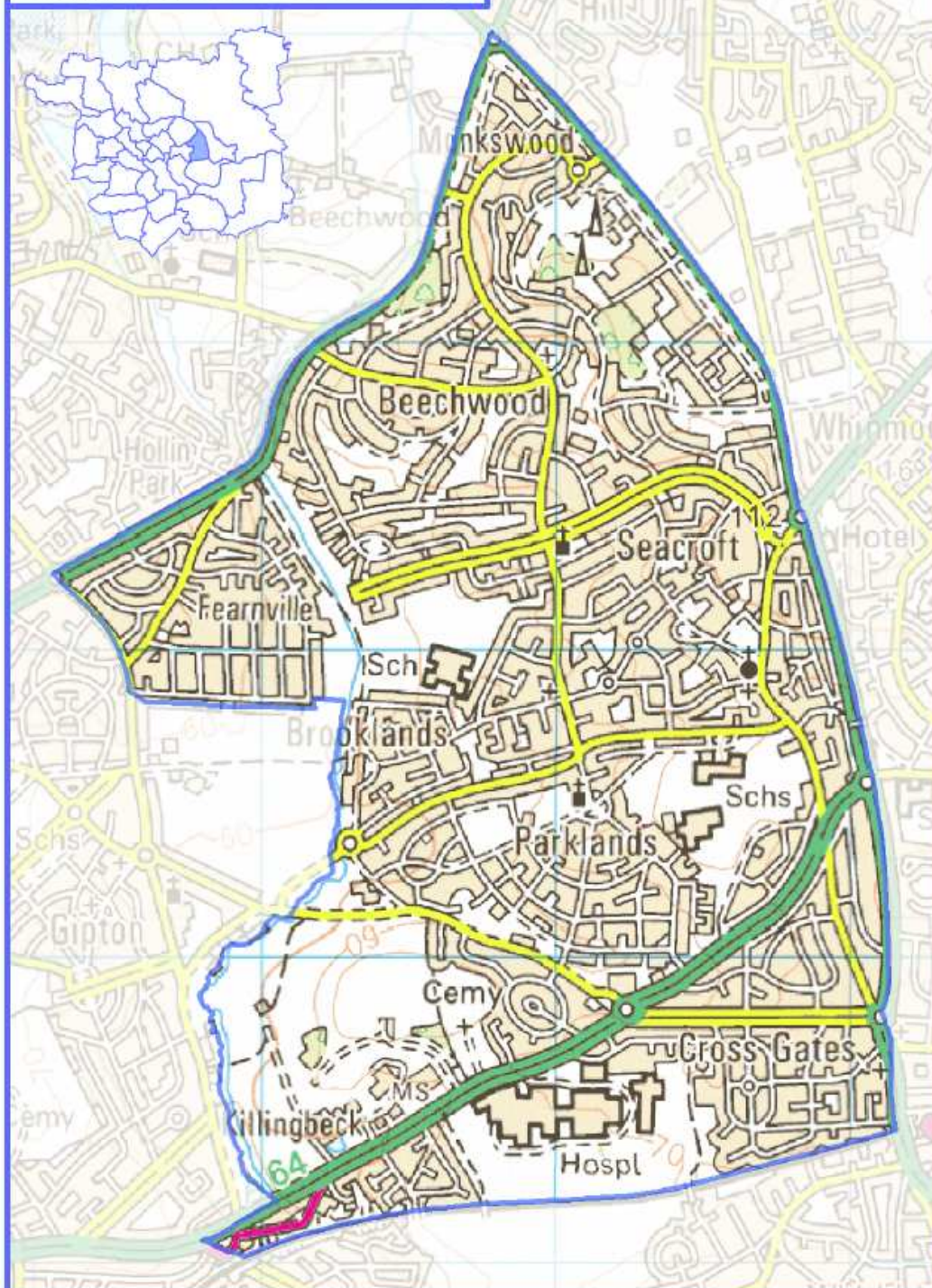
For further information, contact:

Joanne Buck
Neighbourhood Manager, Killingbeck & Seacroft, Gipton.
0113 3367637
joanne.buck@enehl.org.uk

Contents

Map of the Killingbeck and Seacroft Priority Neighbourhood	Page 3
Overview of Neighbourhood index data	Pages 4 & 5
Overview of the area, including delivery mechanisms	Pages 6 & 7
Comparison of neighbourhood Index data 2011 and 2012	Pages 8 - 11
Overview of partnership working	Pages 12- 13
Identified priorities for 2012/13	Pages 14-19
Action Plan	Pages 20-23
Appendix 1 – Seacroft North Neighbourhood Index 2012 profile	Page 24
Appendix 2 – Seacroft South Neighbourhood Index 2012 profile	Page 25
Appendix 3 – Crossgates and Killingbeck Neighbourhood Index 2012 profile	Page 26
Appendix 4 - Fearnville, Hollin Park, Beechwood and Brooklands Neighbourhood Index 2012 profile	Page 27

Killingbeck and Seacroft Ward



PRODUCED BY THE STRATEGY TEAM, NEIGHBOURHOODS AND HOUSING DEPT, LEEDS CITY COUNCIL

This map is based upon the Ordnance Survey's Digital Data with the permission of the Ordnance Survey on behalf of the Controller of Her Majesty's Stationary Office

N

Introduction to Killingbeck and Seacroft Neighbourhood Improvement Plan 2013/14

Neighbourhood Improvement Plan – This document provides an overview of the latest statistical profile for Killingbeck and Seacroft. The NIP analyses the latest Neighbourhood Index data and compares the previous year's statistics. This highlights the emerging issues in the neighbourhood which need to be addressed. Both the Community Leadership Team and Local Management Team have been consulted on the data produced and have agreed the emerging priorities for next twelve months.

Neighbourhood Index Leeds is split into 108 Middle Super Output Areas (MSOAs), which are used as the basis for the NI data. Each MSOA in Leeds has a population of 7,000. The Killingbeck and Seacroft ward is made up of four MSOAs, as follows:

- **E02002364 – Seacroft North**
- **E02002369 – Fearnville, Hollin Park, Beechwood and Brooklands**
- **E02002379 – Seacroft South**
- **E02002390 – Crossgates and Killingbeck**

The Neighbourhood Index profiles for these areas are attached as appendices to this document.

The Neighbourhood Index 2012 is made up of data from the following time periods:

Economic Activity

- % of working age population who are claiming Job Seekers Allowance – Snapshot at April 2012
- % of working age population who are claiming Incapacity Benefit / Severe Disablement Allowance / Employment Support Allowance - Snapshot at November 2012
- % of working age population who are lone parents claiming Income Support - Snapshot at November 2012

Low Income

- Number of children under the age of 16 or 16 – 18 years olds still in full time education, in working age households, in receipt of Income Support or Job Seekers Allowance and claiming Housing / Council Tax benefit - Snapshot at November 2012
- Number of working age households claiming Housing / Council Tax benefit but not in receipt of Income Support or Job Seekers Allowance - Snapshot at November 2012
- Number of older age (Where the claimant, partner or both are above the age of 60) households in receipt of Housing / Council Tax benefit Snapshot at November 2012
- Number of liability orders issued for non-payment of Council Tax - 2012/13 financial year

Education

- % of pupils in secondary schools who are persistent absentees – 2011/12 academic year
- % of pupils achieving level 4+ in Key Stage 2 English and Maths – 2012 exam cohort
- % of pupils achieving 5 or more GCSEs at grades A*-C, including English and Maths - 2011 exam cohort
- % of pupils achieving 78+ points plus 6+ in Communications, Language and Literacy (CLL) and in Personal, Social and Emotional (PSE) at Foundation Stage - 2012 exam cohort
- % of young people who are not in education, employment or training (NEET) - Quarterly average NEET figure (November 2012 – January 2013)

Community Safety

- Number of crimes and other acts against individuals - 1st April 2011 to 31st March 2012
- Number of acquisitive property crimes - 1st April 2011 to 31st March 2012
- Number of environmental property crimes and disorders - 1st April 2011 to 31st March 2012
- Number of other community disorders - 1st April 2010 to 31st March 2012

Environment

- Number of fly tipping clearance jobs attended by City Services - April 2011 to March 2012
- Number of graffiti clearance jobs attended by City Services - April 2011 to March 2012
- Number of service requests received by HEAS dealing with waste issues - April 2011 to March 2012

Health

- Circulatory Disease Mortality in under 75's per 100,000 population - 3 Year Aggregate 2008 -2010
- Cancer Mortality in under 75's per 100,000 population - 3 Year Aggregate 2008 -2010
- Low Birth Weight all births (still and live) weighing less than 2500 grams - 5 Year Aggregate 2008 -2010
- Number of adults receiving community based services provided through the adult social care process - 1st April 2010 to 31st March 2012

Housing

- Average Purchase Price (residential properties) - June 2011 – May 2012
- Ratio of house prices to income - June 2011 – May 2012
- Housing Turnover (Number of changes in Council Tax status of properties) - 1 April 2011 to 31 March 2012
- Empty Properties (90+ days in total) - 1 April 2011 to 31 March 2012

Introduction to Killingbeck and Seacroft Priority Neighbourhoods

E02002364 – Seacroft North: The area is located in the Inner East and is bounded to the east by the Ring Road and to the west by Wetherby Road. It lies within the Seacroft Priority Neighbourhood. The boundary cuts through the Seacroft estates from the Monkswoods stretching down to Baileys Lane and The Green.

The population is predominantly White British and the age breakdown shows slightly higher than average proportions of both children and older people.

It contains several large inter-war Council estates with almost 60% of households renting from the local authority (through an ALMO). Semi-detached housing accounts for over 50% of the stock and there are several large purpose built blocks of flats accounting for a further 27% of households. Almost 90% of properties are classified in Council Tax Band A.

This area contains Seacroft District Centre which is home to a number of shops, including a large Tesco store and a major bus interchange. The area also contains Seacroft Library and Kentmere Community Centre, where North Seacroft Good Neighbours are based. Primary schools in the area are: Grange Farm and Our Lady of Good Counsel Roman Catholic School. Seacroft Industrial Estate is situated off Limewood Road as is Limewood Road waste sorting site. A community radio, East Leeds FM, is based in this area.

Seacroft north is ranked 22 on the combined Neighbourhood Index. Across the domains the scores are generally lower than the city averages, but particularly so in the Economic Activity and Health domains where the area scores are significantly lower than those for the city and the area is ranked 11 and 7 respectively. The only exceptions are the Housing and Environment domains where the area scores are slightly higher.

E02002369 – Fearnville, Hollin Park, Beechwood and Brooklands: The area is located in the Inner East. It is bounded by Easterly Road to the north and is divided by the Wyke Beck with parts of the Seacroft estates on one side and Fearnville /Hollin Park on the other. It lies within the Seacroft Priority Neighbourhood.

The age breakdown shows a higher than average proportion of children and young people. At 10% the BME population broadly reflects the city average.

The area contains several large inter-war Council estates with almost 50% of households renting from the local authority (through an ALMO). Semi-detached housing accounts for almost 60% of the stock in the area with purpose built flats accounting for a further 20%. 74% of properties are classified in Council Tax Band A and 18% in Band B.

This area contains the RISE Catalyst Centre. The only school in the area is the David Young Community Academy. A local park, the Rein, is located here.

This neighbourhood forms part of the EASEL regeneration area. Wyke Beck cuts through the area where the wild life includes kingfishers.

Fearnville / Hollin Park / Beechwood / Brooklands area is ranked 23 on the combined Neighbourhood Index. Across the Domains the scores are generally lower than the city averages, the only exception being the Housing domain where the score is slightly higher.

E02002379 – Seacroft South The area is located in the Inner East. It is bounded by the Ring Road to the east, York Road to the south, Foundry Mill Drive to the west and Brooklands Avenue to the north. It lies within the Seacroft Priority Neighbourhood. The population is predominantly White British and the age breakdown shows a higher than average proportion of children and young people. 57% of households are renting from the local authority (through an ALMO). Semidetached housing accounts for 60% of the stock in the area with terraced housing accounting for a further 20%. 86% of properties are classified in Council Tax Band A. The area contains Alston Lane Community Centre. The schools in this area are Beechwood Primary School, Seacroft Grange Primary School, Parklands Primary School and East Leeds Academy. South Seacroft One-stop Customer Service Centre is located here as is West Yorkshire Police Headquarters in Killingbeck. Acorn Business Centre is home to a host of companies, including LCC and a newly established The Beck, a support project for young people. Denis Healy Centre is the main youth hub for the area. This neighbourhood forms part of the EASEL regeneration area. The area borders on Seacroft Gardens. Main businesses are located along York Road, which is a busy dual carriageway.

Seacroft South is ranked 16 on the combined Neighbourhood Index. Across the individual domains the scores are generally lower than the averages for the city but particularly so in the Economic Activity domain where it is ranked 4. The only-exception is the Environment domain where the score is very slightly higher than the city average

E02002390 – Crossgates and Killingbeck ; The area is located in the Inner East. It is bounded by Station Road to the east, the railway to the south, cutting up through the Wyke Beck valley to Foundry Mill Drive. The area is also bi-sected by the York Road. It lies within the Seacroft Priority Neighbourhood. The population is predominantly White British and the age breakdown shows slightly higher than average proportions of children and young people and of older people. It is a mixed tenure area but with a significantly high proportion of households renting from a housing association or other registered social landlord (over 15%). Semi-detached housing accounts for 65% of the stock with terraced housing accounting for a further 18%. 34% of properties are classified in Council Tax Band A and 53% in Band B. The area contains Crossgates Library, Seacroft Hospital and the Killingbeck Retail Park, which is home to a large ASDA supermarket. The Cross Gates Community Centre is also in this area. The only school in this area is Cross Gates Primary School. Businesses are located along York Road, this is a busy dual carriageway at this point. This neighbourhood forms part of the EAST LEEDS regeneration area. Crossgates / Killingbeck is ranked 38 on the combined Neighbourhood Index. Across the domains scores are generally in line with or slightly below the averages for the city.

Neighbourhood Index Domains – 2011/12

The section below provides an overview comparison of the Neighbourhood Index domain data from 2011 and 2012 profiles. The domain areas will look at the 4 MSOAs that make up the K&S priority neighbourhood. The neighbourhoods will be referred to their MSOA numbers throughout this section.

This section will be used to identify the domain areas affecting the overall scoring of the neighbourhood. From this information, actions to create a positive impact in the neighbourhood will be developed as part of the NIP action plan to be implemented by the LMT and CLT.

From 2009, the overall rankings of the MSOAs have changed as follows:

MSOA	Ranking 2011	Ranking 2012	Variation
E02002364 – Seacroft North	22	22	-
E02002369 – Fearnville, Hollin Park, Beechwood and Brooklands	21	23	+2
E02002379 – Seacroft South	13	16	+3
E02002390 – Crossgates and Killingbeck	38	38	-

Economic Activity

E02002364: Seacroft North. This area consistently performs below the City average, although there has been a significant overall improvement in 2012, largely due to significant falls in the claimant rates for Incapacity Benefit and lone parents in receipt of Income Support. The Job Seekers Allowance claimant rate has however increased again in 2012. This area currently has the second highest Incapacity Benefit claimant rate in the City.

E02002369 – Fearnville, Hollin Park, Beechwood and Brooklands. This area consistently performs below the City average. There were significant improvements in all three indicators in 2011, but with the exception of lone parents in receipt of Income Support, these have not been sustained into 2012

E02002379 – Seacroft South. This area consistently performs well below the City average and overall performance has deteriorated in 2012, with only the claimant rate for lone parents in receipt of Income Support showing a significant improvement (although it is currently the second highest claim rate in the City).

E02002390 – Crossgates and Killingbeck . This area consistently performs at or below the City average. The Job Seekers Allowance claimant rate has fallen in each of the last two years (although not significantly so). The Incapacity Benefit claimant rate is showing significant increase in 2012, while the claimant rate for lone parents in receipt of Income Support has stayed broadly the same over the last three years

Low Income

E02002364: Seacroft North This area generally performs below the City average (except in relation to liability orders where performance has been more in line with the City figures). There has been deterioration in the domain score over the years, largely due to the increasing number of benefit claimants, particularly in relation to children in workless households and working households claiming benefit.

E02002369 – Fearnville, Hollin Park, Beechwood and Brooklands. This area consistently performs at or below the City average and there has been a continual deterioration in the overall domain score, largely due to the increasing number of working households that are claiming benefit

E02002379 – Seacroft South. This area generally performs at or below the City average and there has been a continual deterioration in the domain score over the years, due in part to the increasing number of working households that are claiming benefit and the increasing number of children in workless households, both of which increased significantly again in 2012.

E02002390 – Crossgates and Killingbeck. This area generally performs in line with the City average, although there has been a continual deterioration in the domain score, with an increasing number of working households that are claiming benefit.

Education

E02002364: Seacroft North. This area consistently performs at or below the City average. The overall domain score improved significantly in 2010, with notable improvements in educational attainment levels (although these improvements were reversed in 2011). In 2012 the indicators relating to persistent absence and Key Stage 4 both showed significant improvement, but there was a marked increase in NEETs.

E02002369 – Fearnville, Hollin Park, Beechwood and Brooklands. This area consistently performs at or below the City average. There was a notable deterioration in the domain score in both 2010 and 2011, but there has been a very significant improvement in 2012, with all the indicators showing improvements this year.

E02002379 – Seacroft South. This area consistently performs below the City average (the only exception being Key Stage 2 attainment in 2010 and 2011), but has shown significant overall improvement in 2012. There has been a steady and significant improvement in persistent absenteeism over the years (although the area currently has the third highest rate in the City), Performance in respect of the attainment indicators has been more varied, but all three have shown significant improvement in 2012.

E02002390 – Crossgates and Killingbeck. This area consistently performs at or below the City average, but has shown significant overall improvement since 2010. There was a notable increase in the level of NEETs in 2011, but this has reduced again in 2012. Foundation Stage is the only indicator to have shown any significant decline in 2012.

Community Safety

E02002364: Seacroft North. This area generally performs below the City average, although it is showing continual overall improvement. There were some significant improvements in 2010 which were generally sustained in 2011, the most notable exception being acquisitive property crime where the number increased significantly in 2011. All four indicators showed improvement again in 2012.

E02002369 – Fearnville, Hollin Park, Beechwood and Brooklands. This area consistently performs at or below the City average, although there have been some notable improvements particularly in 2011 and again in 2012. The numbers for all four indicators fell in 2012.

E02002379 – Seacroft South. This area consistently performs at or below the City average, but there have been very significant improvement across the board in 2012 (although the area currently has the second highest number of environmental crimes in the City).

E02002390 – Crossgates and Killingbeck. This area consistently performs at or below the City average. There has been a notable overall improvement in 2011 and again in 2012. Acquisitive property crime is the only indicator to have shown any increase in 2012.

Environment

E02002364: Seacroft North. This area generally performs at or below the City average and has shown continual overall improvement.

E02002369 – Fearnville, Hollin Park, Beechwood and Brooklands. This area generally performs at or below the City average, but there have been notable improvements in 2012 in the number of fly tipping and waste clearance

E02002379 – Seacroft South. This area consistently performs in line with or slightly above the City averages (the only exception being fly-tipping in 2011) and has shown a notable improvement in 2012

E02002390 – Crossgates and Killingbeck . This area consistently performs at or above the City average

Health

E02002364: Seacroft North. This area consistently performs at or below the City average. There was a notable deterioration in the domain score in both 2010 and 2011, but this has improved significantly in 2012, with all indicators except cancer mortality showing significant improvement. The area currently has the second highest cancer mortality rate in the City.

E02002369 – Fearnville, Hollin Park, Beechwood and Brooklands. This area consistently performs at or below the City average. Overall there is a continual improvement, although performance is more varied in respect of the individual indicators. There has however been significant improvement in 2012 in respect of the Low Birthweight and Adult Social Care indicators

E02002379 – Seacroft South. This area generally performs below the City average (the only exception being the indicator relating to Adult Social Care). There has been a significant improvement in 2012, with all four indicators showing some degree of improvement.

E02002390 – Crossgates and Killingbeck. The area generally performs in line with, or slightly below, the City average. There has however been a significant deterioration in overall performance in 2012, with significant increases in both the circulatory disease and cancer mortality rates. The incidence of low birth weight has also increased in 2012 (but not significantly so). Adult Social Care is the only indicator to show any improvement in 2012.

Housing

E02002364: Seacroft North. This area generally performs at or slightly above the City average, except in relation to house prices where it is below average, currently standing at £88,676.

E02002369 – Fearnville, Hollin Park, Beechwood and Brooklands. This area consistently performs at or below the City average. There was a general overall improvement in 2011, but performance in 2012 has been more varied.

E02002379 – Seacroft South. This area generally performs at or below the City average, although there has been a continual overall improvement. There was a notable fall in house prices in 2010 to £85,478 but this has recovered in subsequent years with the price rising in 2012 to £105,700. There has been a steady and significant fall in the number of empty properties

E02002390 – Crossgates and Killingbeck This area generally performs in line with the City average, the most notable exception being the indicator relating to purchase price which has fallen consecutively from £133,600 in 2009 to £122,713 in 2012 . There has been a notable improvement in overall performance in both 2011 and 2012, and the area currently has the third lowest rate in the City for properties empty for 90+ days during the course of the year.

Partnership Working and Delivery mechanisms

The Community Leadership Team - This is made up of representatives of the local community, it includes parent Governors from local schools, representatives from local recognised tenants and residents associations, representatives from the local business community and elected community champions. This meeting is chaired by a local elected member and the group meet at least 4 times per year. The general purpose of this meeting is to oversee the development of the Neighbourhood Improvement Plan in particular around identifying local priorities that require action, helping to measure the success of interventions and crucially to take a lead in communicating to the wider community what activities are taking place and what improvements have been achieved in the local areas. This approach improves public awareness in the partnership and ensures that it is responsive to public needs.

Community First Panel – Community first is a government initiative, which is delivered through the Community Development Foundation (CDF). They work with several organizations to deliver the program, including supermarket chain Asda . Killingbeck and Seacroft ward have been awarded £101,730 over a four year period for projects to provide small amounts of funding to small groups, enabling people in specified deprived wards to improve their area. We are now in the third year of the funding stream. To avoid duplication and increase transparency, the Killingbeck and Seacroft panel members are made up from Community Leadership Team representatives and a local elected member.

Priority Neighbourhood Local Management Team– This is made up of local service providers operational /middle managers and chaired by the Neighbourhood Manager. This group will work with the Neighbourhood Improvement Plan and drive forward operational improvements in the priority neighbourhood. Members of this group are selected from local service providers and it is recommended that members of this group cannot also be members of the Community Leadership Team as this could create a conflict of interests.

Inner East Area Committee – This will provide a strategic reporting mechanism for the priority neighbourhood and will assist in ensuring the buy in of partner agencies and signing off the project and NIP for a twelve month period. The Area Committee will receive 6 monthly progress reports on the status of the project and an annual assessment and comparison of statistics alongside each years NIP.

Links to Strategic Partnerships – Regular updates on the progress of the NIP, LMT and CLT will be fed through to the East North East Officer Co-Ordination Group to ensure strategic buy in to the priorities and the ways of working in the neighbourhood. Updates will also be fed through to the ENE Health & Wellbeing Partnership, Divisional Community Safety Partnership.

Tasking teams – To ensure the delivery of actions from the NIP, the K&S tasking team will be an integral mechanism to tackle crime and grime issues in the locality. We also look at addressing issues which could affect vulnerable people and families, including school attendance and NEETs.

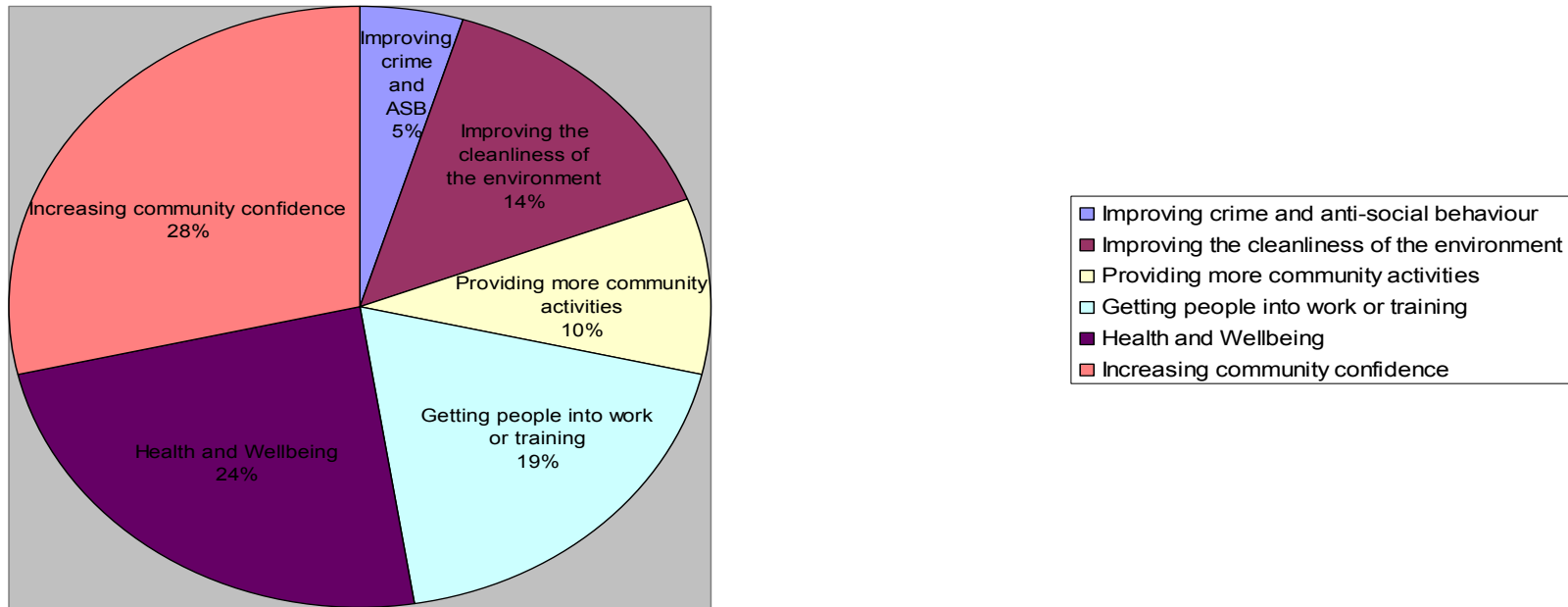
Guidance and Support partnership - A Preventative Tasking approach has recently been introduced to the Team, named guidance and support. The guidance and support approach is to have an in-depth look at offending nominals, vulnerable children and families, victims and perpetrators of Domestic violence with a view to offer additional support, diversionary and enforcement tactics.

Guidance and Support partnership also focuses on the Families First Agenda, which is intended to ensure that area priorities and resources are focused on improving services to those children, young people and their families who are at most risk of poor outcomes, Looked After Children and those at risk of being accommodated, young people who are NEET or at risk of becoming so, those children and young people who are persistently absent from school.

Equality Framework – To ensure that all activity which is delivered through the NIP is accessible for all sections of the community, a light touch equality impact assessment will be undertaken during the development of the NIP action plan. Equality impact assessments will also be carried out when any projects in the neighbourhood is being undertaken. This is in line with Leeds City Council's commitment to achieve the excellent rating for equalities.

Identified Priority Themes for K&S Priority Neighbourhood

To find out people's views about what they see as top priority for where they live, a survey was distributed to all members of the Community Leadership Team to disseminate to their members. It must be said that this consultation was a light touch which captured the views from local resident groups, youth services, local schools and members of the parish. The purpose of the survey was to find out about residents views about where they live and the local services which they receive. Of the 81 respondents, the priorities were as follows:



In addition to the consultation, the below five key priorities have been agreed by Community Leadership Team for K&S NIP 2013/14. The data sets used is taken from Neighbourhood Index data 2012.

1. Crime, Burglary and Anti social behaviour

E02002364 – Seacroft North

The Community safety ranking in 2012 has stayed static at 21st place. Crimes against a person fell from 333 to 304; acquisitive property crime reduced from 538 to 430, community disorders fell 693 to 566.

E02002369 – Fearnville, Hollin Park, Beechwood and Brooklands

The Community safety ranking 2012 fell one place to 19. Crimes against a person decreased from 357 to 316, acquisitive property crime fell from 460 to 328, community disorders reduced from 742 to 577.

E02002379 – Seacroft South

The Community safety ranking 2012 has increased by seven places to 14. Crimes against a person decreased from 417 to 340, acquisitive property crime fell from 568 to 438, community disorders reduced from 876 to 580.

E02002390 – Crossgates and Killingbeck

The Community safety ranking 2012 has stayed static at 26th place. Crimes against a person decreased from 246 to 208, acquisitive property crime reduced from 598 to 596, community disorders reduced from 618 to 466.

Community safety is of significant importance to residents as demonstrated by household surveys conducted in 2009/10 where 74% of respondents indicated that crime and anti social behaviour was a priority for them. The CLT have also placed community safety high on the agenda.

2. Reducing worklessness, persistent absenteeism /NEETs

The NI NEET data is a snap shot in time from Nov 2011– Jan 2012 therefore can not be relied upon solely to demonstrate the direction of travel throughout the year. When measured against the City average all areas with the ward have a higher proportion of young people living in the area.

E02002364 – Seacroft North: NEET figures rose from 11.45% to 12.99%

E02002369 – Fearnville, Hollin Park, Beechwood and Brooklands: NEET figures reduced from 13.77% to 12.44%

E02002379 – Seacroft South: NEET figures increased 12.63% to 18.15%¹

E02002390 – Crossgates and Killingbeck: NEET figures decreased from 8.72 % to 6.89%

E02002364 – Seacroft North

Children in workless households increased from 357 to 406. JSA claimants rose from 9.09% to 9.85%, incapacity benefit claimants reduced from 14.12% to 12.57%.

E02002369 – Fearnville, Hollin Park, Beechwood and Brooklands

Children in workless households decreased by 1 to 508. JSA claimants rose 7.33% to 9.02%, incapacity benefit claimants increased from 9.59 % to 9.69%.

E02002379 – Seacroft South

Children in workless households increased from 616 to 727. JSA claimants increased from 8.85% to 10.09%, incapacity benefit claimants increased slightly from 11.70% to 11.84%.

E02002390 – Crossgates and Killingbeck

Children in workless households increased from 221 to 243. JSA claimants reduced from 5.63% to 5.53%, incapacity benefit claimants increased from 8.18% to 8.655.

E02002364 – Seacroft North - Persistent absentees decreased in 2012 from 11.89% to 8.27%

E02002369 – Fearnville, Hollin Park, Beechwood and Brooklands - Persistent absentees reduced from 12.24% to 10.14%

E02002379 – Seacroft South -Persistent absentees reduced from 15.82% to 14.42%

E02002390 – Crossgates and Killingbeck -Persistent absentees reduced from 6.33% to 4.76 %

3. Supporting vulnerable people and families with complex needs

To embed the Top 100 methodology and troubled families initiative, we have introduced multi agency guidance and support panel to assess troubles families, target appropriate resources and ensure agencies are accountable for support and guidance to meets the family needs.

Domestic Violence or abuse incidents have been identified as a major area of concern by both partners and community leadership team members. As a result Killingbeck and Seacroft have been chosen to develop a new pilot approach in dealing with incidents and supporting families affected by Domestic abuse.

4. Promote physical health and Emotional Wellbeing - Lung health / COPD / stopping smoking

Partner agencies, ENE Health and Wellbeing Partnership have highlighted the above as the current health priority for Seacroft. Smoking tobacco is one of the most important causes of serious illness and early death it is a key risk factor in the development of coronary heart disease, stroke, lung and other cancers. It is also the primary cause of Chronic Obstructive Pulmonary Disease, a collection of lung conditions including emphysema and bronchitis. This condition is irreversible and as it progresses the patient is subjected to a number of distressing symptoms as well as a series of costly, unplanned admissions to hospital.

Reported prevalence of cigarette smoking (the proportion of smokers in the population aged 16+) in Seacroft varies across general practice from a high of 35.3% in Windmill practice to 21.6% in Colton Mill. However this is the population who attend and report smoking to their GP.

Practice Code	Practice Name	% of patients with smoking status recorded	% practice smoking prevalence aged 16+	Number of patients smoking aged 16+
B86007	Windmill Health Centre	94.57	35.3	2,347
B86093	Park Edge	97.29	25.5	1,110
B86670	Whinmoor	98.33	28.2	439
B86055	Ashfield	96.82	26.7	1,345
B86075	Colton Mill	95.64	21.6	1,956
B86062	Rookwood	93.16	29.1	2,244

Other data estimates smoking prevalence higher and in Green/Kentmere Approach/North Parkway, 49% of the population currently smoke against a Leeds rate of 34.7% (CACI 2009). Tobacco spend is £8.27 per week per person compared to an average of £5.74 for Leeds. In South Seacroft prevalence rises to 57%, but tobacco spend is lower at £7.45 per person per week.

- Compared to the City average Seacroft North is high in both CDM and cancer mortality
- Seacroft South has an exceptionally high rate of cancer mortality

5. Increase resident's influence and community cohesion

The Community Leadership Team has assisted with the community cohesion and residents influence, this is now embedded as part of the Team Seacroft development. Several events, including Seacroft summer Gala and Seacroft Christmas Gala are now annual events where community views are collected.

The ward will receive £101,760 from the Community First Foundation, over a four year period. A panel has been recruited from the CLT membership to assist local community groups applying for funding and assessing bids submitted. The CF funding will help local groups become sustainable within the community, promote cohesion and raise awareness of the Community leadership Team. The following groups have received funding to deliver local activities:

Funded Group	Recommended Amount
South Seacroft Friends & Neighbours	2,500.00
North Seacroft Good Neighbours	561.00
Seacroft village hall management committee	2,500.00
Leeds Tigers	2,500.00
Seacroft Parish Children and Young People's Programme	2,500.00
Seacroft Green Residents Association	300.00
Seacroft Gala committee	1,675.00
East Leeds Youth Theatre	2,500.00
LS14 Trust	2,450.00
Breathe Easy - Post pulmonary rehab	1,920.00

Cloth Cat Studios Ltd	1,140.00
Kick UK (Centre of Excellence)	2,500.00
Heads Together Productions	2,190.00
Seacroft Methodist Church	1,045.00
Seacroft Parish Children and Young People's Programme	2,500.00
13th Leeds Templars St James Seacroft Scout Group	780.00
O.I.L Opportunities Inspiring Learning	2,500.00
Grand Total	32,061.00

6. Providing Community Activities

Young people have been consulted on what activities they would like to see delivered in the summer holidays. Wellbeing and cluster budgets are pooled to create as package of events and activities to meet the outcomes of the consultation. These activities are in addition to universal activities already in place for young people.

In response to community request, a bingo session run by local mums and volunteers from strategic agencies runs every two weeks. The sessions are very well attended with between 30 and 50 local women attending. The success of the bingo is attracting local youths to the building, therefore a volunteer has now been recruited to play football and engage the youths whilst the bingo sessions are running.

Several activities and groups are making use of the local community centres, including, a vulnerable men's group run by Space 2 that meets weekly at Alston lane, a vulnerable young girls group run by Women's Health matters meets weekly at Alston Lane. A new inclusive and active group is developing very well; this group also meet at Alston lane. Both Kentmere community centre and Crossgates community centre have a range of activities taking place for all age ranges.

An "On Street "youth bus project is in operation four nights a week to engage young people into diversionary activities.

ACTION PLAN

Reduce the levels of Crime Burglary and ASB						
Priority	Action to be taken	Delivery Partners	Success measure	Outputs	Financial Resources	Delivery Timescale
Reduce levels of Burglary	Use OBA action plan to identify vulnerable people streets and target harden properties					
	Identify perpetrators of burglary					
	Install CCTV to cover Seacroft South black spot					
Reduce levels of ASB involving young people	LASBT to utilise Hosing tenancy tools					
	Deploy On Street team to hot spot areas					
	Increase youth activities across					

	the ward and in hot spot areas					

Reducing worklessness, persistent absenteeism / NEETs						
Priority	Action to be taken	Delivery Partners	Success measure	Outputs	Financial Resources	Delivery Timescale
Improve access to employment opportunities	Implement a Job club at Dennis Healy centre					
	Organise a Job fare in the community Utilise NEET sweeps to identify training opportunities					
	Identify apprenticeship opportunities					
	Utilise On Street to target persistent absenteeism					

Supporting vulnerable people and families with complex needs						
Priority	Action to be taken	Delivery Partners	Success measure	Outputs	Financial Resources	Delivery Timescale
Identify vulnerable people / families	Vulnerable families / children discussed at Guidance and support.					
Identify reasons for vulnerability	Engage in local support groups Use resources available to support people					

Promote physical health and Emotional Wellbeing - Lung health / COPD / stopping smoking						
Priority	Action to be taken	Delivery Partners	Success measure	Outputs	Financial Resources	Delivery Timescale
Reduce levels of childhood obesity	Work with cluster to identify a package of support for schools					
Support people to stop smoking and increase						

awareness of the dangers of niche tobacco						
Improve the life quality of older residents						

Increase resident's influence and community cohesion

Priority	Action to be taken	Delivery Partners	Success measure	Outputs	Financial Resources	Delivery Timescale

Providing Community Activities

Priority	Action to be taken	Delivery Partners	Success measure	Outputs	Financial Resources	Delivery Timescale



Leeds Neighbourhood Index

Domain Summary	2011		2012		Change	
	Rank	Score	Rank	Score	Rank	Score
Economic Activity	7	21.44	11	25.72	4	4.28
Low Income	26	34.31	26	26.62	0	-7.69
Housing	51	63.89	37	66.37	-14	2.48
Health	3	15.56	7	28.80	4	13.24
Environment	43	87.65	59	92.05	16	4.40
Education	24	32.07	25	38.38	1	6.31
Community Safety	21	67.62	21	73.97	0	6.35
Leeds Index	22	25.40	22	29.36	0	3.96

Indicators	2011		2012		Change	
	Data	Score	Data	Score	Data	Score
Job Seekers' Allowance	9.09%	26.23	9.85%	18.01	0.76	-7.22
Incapacity Benefit	14.12%	-3.12	12.57%	8.99	-1.55	12.11
Lone Parent Income Support	3.08%	59.50	2.57%	66.26	-0.51	6.76
Children in Workless Households	357	53.46	406	47.06	49	-6.41
Households Receiving In-Work Benefits	207	27.68	246	13.28	39	-14.39
60+ Households in Receipt of Benefits	557	5.27	548	9.93	-9	1.65
Court Payment Orders	269	55.62	269	55.62	0	0.00
Average Purchase Price	£95,500	4.78	£88,676	2.84	-£6,824	-1.92
Price / Income Ratio	5.51	34.48	6.24	45.37	0.73	10.90
Housing Turnover	9.24%	85.76	9.84%	84.11	0.60	-1.65
Empty Homes (90+ days)	3.87%	92.71	3.77%	92.21	0.10	-0.50
Circulatory Disease Mortality	196.81	11.45	137.07	41.37	-59.54	-29.93
Cancer Mortality	172.65	29.47	193.51	17.88	20.86	-11.79
Low Birthweight	8.74	44.19	8.22	49.26	-0.5	5.08
Adult Social Care	148	40.22	101	66.48	-47	26.26
Fly Tipping	47	90.73	21	96.55	-26	5.82
Graffiti*	14	89.33	14	89.33	*	*
Waste Issues	37	89.17	20	94.43	-17	5.26
Persistent Absenteeism	11.89%	42.32	8.27%	60.83	-3.62	18.52
Foundation Stage	49.21%	53.47	47.27%	50.83	-1.94	-2.64
Key Stage 2	84.10%	46.65	81.97%	42.88	-2.13	-3.77
Key Stage 4	32.14%	24.88	41.67%	38.46	9.53	13.58
NEET	11.45%	30.83	12.99%	21.35	1.54	-9.49
Acquisitive Property Crime	538	66.63	430	74.66	-108	8.03
Environmental Crimes	153	71.27	127	76.80	-26	5.53
Crimes Against Individuals	333	63.72	304	67.20	-29	3.48
Community Disorders	693	64.05	566	71.97	-127	7.91

Notes:

* Due to changes in the service, small area data on the number of graffiti jobs cleared by the Council is not available for 2011/12. To maintain the integrity of the Neighbourhood Index the data for 2010/11 has been rolled forward into the system so the change appears as zero.

Domain Summary: Shows the rank, score and changes for each domain, for each year.

Indicators: Shows the score, underlying data and changes for each indicator, for each year.

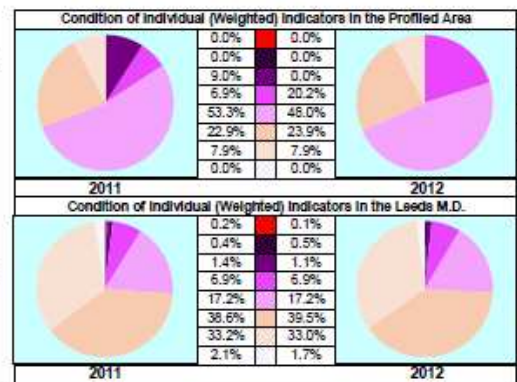
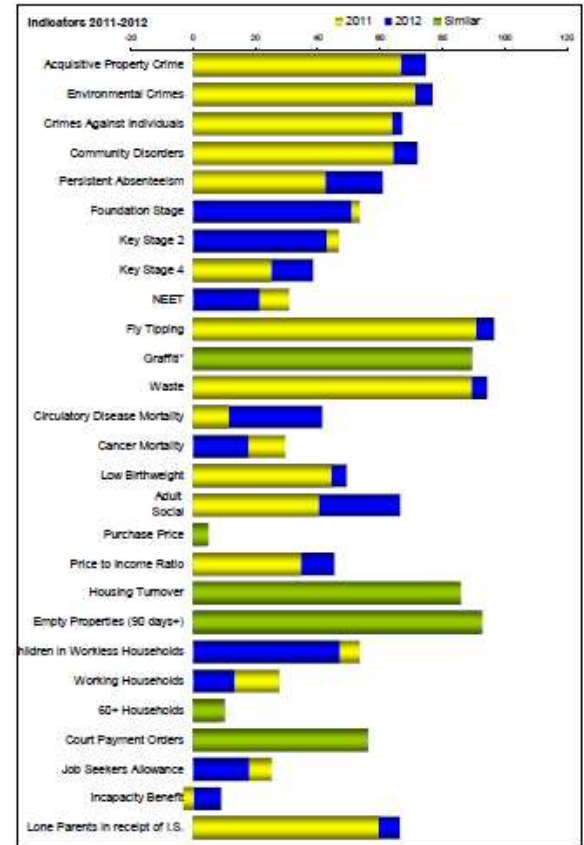
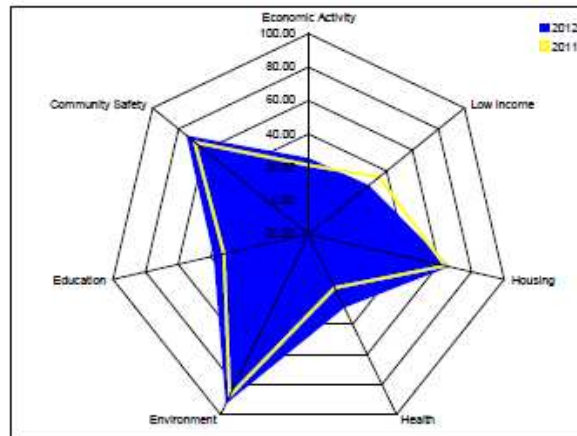
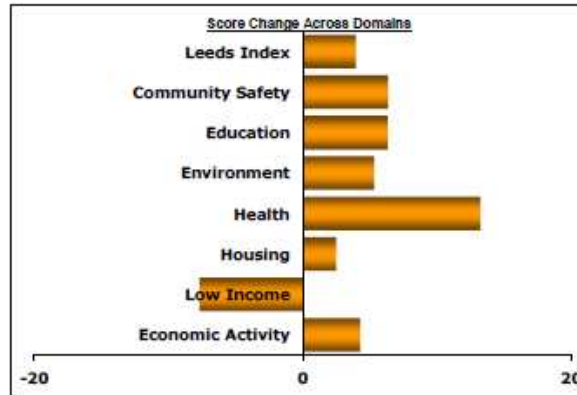
Bar Chart (Score Change Across Domains): A graphical representation of the change in the domain scores between this year and last. N.B. an increase in score indicates improvement, a decrease in score indicates deterioration.

Bar Chart (Indicators 2011-2012): A graphical representation comparing the indicator scores for each year. N.B. indicators showing minimal change are represented by green bars.

Spidergram: A graphical representation comparing the domain scores for each year.

Pie Charts: Graphical representations of the weighted proportions of individual indicators falling into each band.

E02002364: Seacroft North



Colour Keys for Pie Charts and Tables	
Indicator and Domain Index Scores	Indicator and Domain Score Changes
Least Successful	Most Deteriorated
↓	↓
↓	↓
↓	↓
Average	Static
↓	↓
Most Successful	Most Improved

Data cells and pie diagrams are coloured to highlight levels of significance as used elsewhere in the index (from the City average in the case of scores or 'No Change' i.e. Zero, in the case of score changes).

Whilst the concept of "significance" highlights statistically important values within a dataset it must be noted that the bands are unique to each indicator and domain for each year, or period of comparison in the case of "change".



Leeds Neighbourhood Index

Domain Summary	2011		2012		Change	
	Rank	Score	Rank	Score	Rank	Score
Economic Activity	5	14.40	4	12.88	-1	-1.52
Low Income	22	28.00	21	18.27	-1	-9.73
Housing	37	58.77	24	60.04	-13	1.27
Health	2	14.69	14	37.06	12	22.37
Environment	32	82.63	49	90.67	17	8.03
Education	4	14.11	19	32.83	15	18.72
Community Safety	7	54.70	14	87.51	7	32.81
Leeds Index	13	14.42	16	20.86	3	6.43

Indicators	2011		2012		Change	
	Data	Score	Data	Score	Data	Score
Job Seekers' Allowance	8.85%	27.50	10.09%	15.78	1.24	-11.74
Incapacity Benefit	11.70%	16.83	11.84%	14.76	0.14	-1.08
Lone Parent Income Support	6.15%	10.14	5.47%	28.01	-0.66	8.87
Children in Workless Households	616	19.81	727	5.10	111	-14.51
Households Receiving In-Work Benefits	192	33.21	212	25.83	20	-7.38
50+ Households in Receipt of Benefits	308	54.04	312	53.31	4	-0.74
Court Payment Orders	216	66.03	213	66.60	-3	0.57
Average Purchase Price	£94,000	4.34	£105,700	7.63	£11,700	3.29
Price / Income Ratio	5.59	35.67	5.60	35.82	0.01	0.15
Housing Turnover	12.88%	75.79	12.52%	76.78	-0.36	0.99
Empty Homes (90+ days)	4.88%	86.19	4.77%	86.80	-0.11	0.61
Circulatory Disease Mortality	161.25	29.22	134.53	42.68	-26.72	13.43
Cancer Mortality	212.12	7.17	166.50	32.94	-45.62	25.77
Low Birthweight	9.72	34.89	8.50	46.53	-1.22	11.64
Adult Social Care	64	75.98	68	84.92	-16	8.94
Fly Tipping	68	85.98	25	95.68	-43	9.68
Graffiti	13	90.09	13	90.09	*	*
Waste Issues	58	82.85	35	89.79	-23	7.12
Persistent Absenteeism	15.82%	22.23	14.42%	29.38	-1.40	7.15
Foundation Stage	29.90%	27.14	51.40%	56.46	21.50	29.32
Key Stage 2	64.84%	47.98	73.47%	63.25	8.63	15.29
Key Stage 4	23.23%	12.19	42.16%	39.16	18.93	26.97
NEET	12.63%	23.56	18.15%	-10.45	5.52	-34.01
Acquisitive Property Crime	588	64.40	438	74.06	-130	9.66
Environmental Crimes	280	44.24	219	57.22	-61	12.98
Crimes Against Individuals	417	53.83	340	82.88	-77	9.25
Community Disorders	876	52.66	580	71.10	-296	18.44

Notes:

* Due to changes in the service, small area data on the number of graffiti jobs cleared by the Council is not available for 2011/12. To maintain the integrity of the Neighbourhood Index the data for 2010/11 has been rolled forward into the system so the change appears as zero.

Domain Summary: Shows the rank, score and changes for each domain, for each year.

Indicators: Shows the score, underlying data and changes for each indicator, for each year.

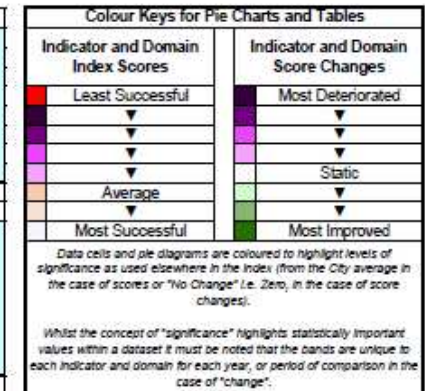
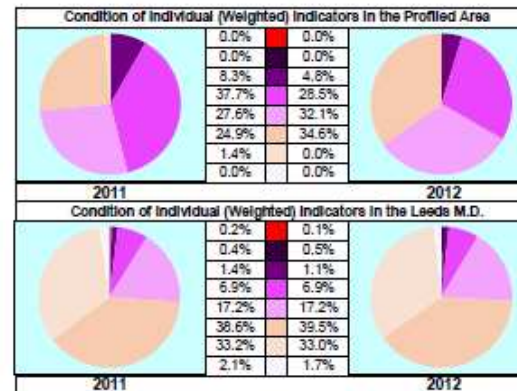
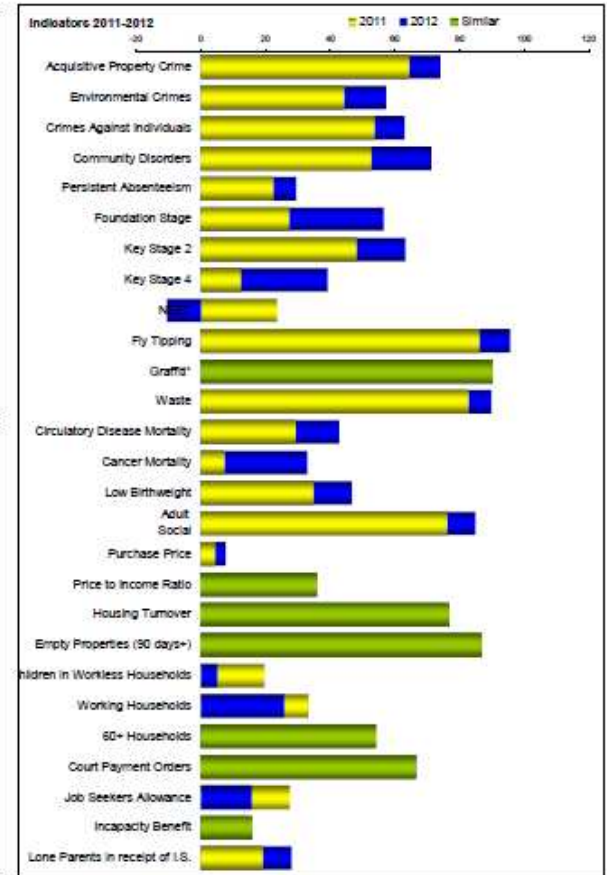
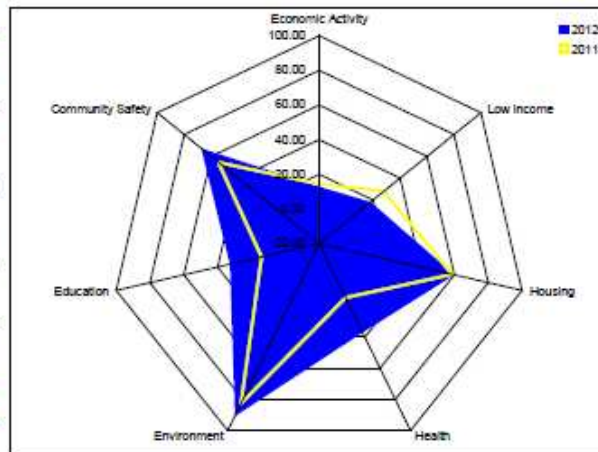
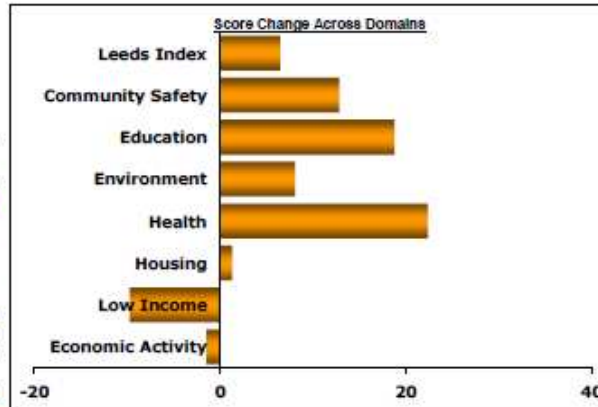
Bar Chart (Score Change Across Domains): A graphical representation of the change in the domain scores between this year and last. N.B. an increase in score indicates improvement, a decrease in score indicates deterioration.

Bar Chart (Indicators 2011-2012): A graphical representation comparing the indicator scores for each year. N.B. indicators showing minimal change are represented by green bars.

Spidergram: A graphical representation comparing the domain scores for each year.

Pie Charts: Graphical representations of the weighted proportions of individual indicators falling into each band.

E02002379: Seacroft South

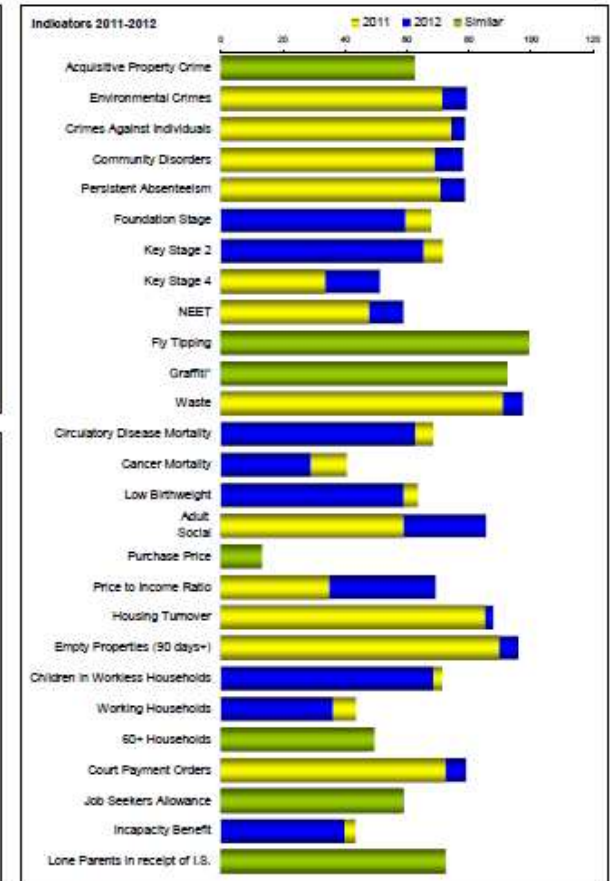
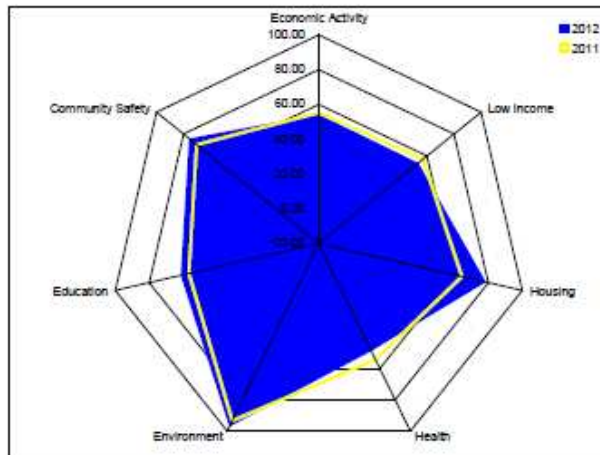


Leeds Neighbourhood Index

E02002390: Crossgates and Killingbeck

Domain Summary	2011		2012		Change	
	Rank	Score	Rank	Score	Rank	Score
Economic Activity	30	55.28	30	54.29	0	-0.97
Low Income	39	57.08	39	53.85	0	-3.42
Housing	54	64.43	88	78.65	34	14.22
Health	42	54.28	28	48.76	-14	-5.52
Environment	73	93.41	86	97.21	13	3.80
Education	43	58.70	45	61.49	2	4.79
Community Safety	26	70.33	26	76.00	0	5.67
Leeds Index	38	54.18	38	56.28	0	2.10

Indicators	2011		2012		Change	
	Data	Score	Data	Score	Data	Score
Job Seekers' Allowance	5.83%	57.94	5.53%	58.84	-0.70	0.90
Incapacity Benefit	8.18%	43.40	8.65%	39.73	0.47	-3.67
Lone Parent Income Support	2.11%	72.26	2.10%	72.38	-0.01	0.13
Children in Workless Households	221	71.24	243	68.37	22	-2.88
Households Receiving In-Work Benefits	164	43.54	184	36.16	20	-7.38
60+ Households in Receipt of Benefits	333	49.45	342	47.79	9	-1.65
Court Payment Orders	183	72.33	148	79.01	-35	6.68
Average Purchase Price	£125,182	13.12	£122,713	12.42	-£2,469	-0.70
Price / Income Ratio	5.53	34.78	7.94	69.25	2.31	34.48
Housing Turnover	9.53%	84.97	8.47%	87.87	-1.06	2.90
Empty Homes (90+ days)	4.26%	89.52	3.11%	95.79	-1.15	6.27
Circulatory Disease Mortality	83.53	68.28	95.07	62.48	11.54	-5.80
Cancer Mortality	152.94	40.61	173.59	28.94	20.65	-11.67
Low Birthweight	6.74	63.57	7.24	58.77	0.5	-4.80
Adult Social Care	115	58.66	67	85.47	-48	26.82
Fly Tipping	14	98.19	9	99.32	-5	1.13
Graffiti*	10	92.38	10	92.38	*	*
Waste Issues	32	90.72	10	97.53	-22	6.81
Persistent Absenteeism	6.33%	70.73	4.76%	78.74	-1.57	8.01
Foundation Stage	59.68%	67.75	53.57%	59.42	-6.11	-8.33
Key Stage 2	78.16%	71.57	74.85%	65.34	-3.51	-6.22
Key Stage 4	38.20%	33.52	50.70%	51.34	12.50	17.82
NEET	8.72%	47.66	6.89%	58.94	-1.83	11.27
Acquisitive Property Crime	598	62.17	598	62.32	-2	0.15
Environmental Crimes	153	71.27	115	79.36	-38	8.09
Crimes Against Individuals	246	74.17	208	78.74	-38	4.57
Community Disorders	618	68.73	486	78.20	-152	9.47



Notes:
 * Due to changes in the service, small area data on the number of graffiti jobs cleared by the Council is not available for 2011/12. To maintain the integrity of the Neighbourhood Index the data for 2010/11 has been rolled forward into the system so the change appears as zero.

Domain Summary: Shows the rank, score and changes for each domain, for each year.

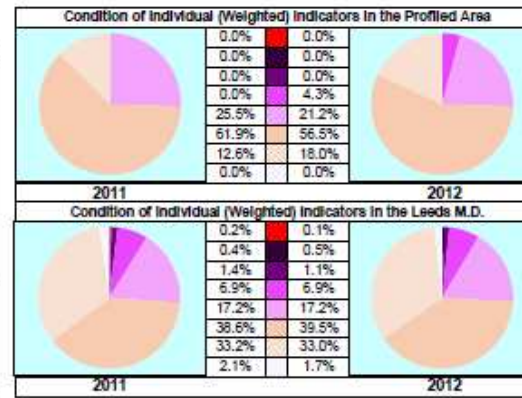
Indicators: Shows the score, underlying data and changes for each indicator, for each year.

Bar Chart (Score Change Across Domains): A graphical representation of the change in the domain scores between this year and last. N.B. an increase in score indicates improvement, a decrease in score indicates deterioration.

Bar Chart (Indicators 2011-2012): A graphical representation comparing the indicator scores for each year. N.B. indicators showing minimal change are represented by green bars.

Spidergram: A graphical representation comparing the domain scores for each year.

Pie Charts: Graphical representations of the weighted proportions of individual indicators falling into each band.



Colour Keys for Pie Charts and Tables	
Indicator and Domain Index Scores	Indicator and Domain Score Changes
Least Successful	Most Deteriorated
▼	▼
▼	▼
Average	Static
▼	▼
Most Successful	Most Improved

Data cells and pie diagrams are coloured to highlight levels of significance as used elsewhere in the Index (from the City average in the case of scores or 'No Change' i.e. Zero, in the case of score changes).

Whilst the concept of "significance" highlights statistically important values within a dataset it must be noted that the bands are unique to each indicator and domain for each year, or period of comparison in the case of "change".

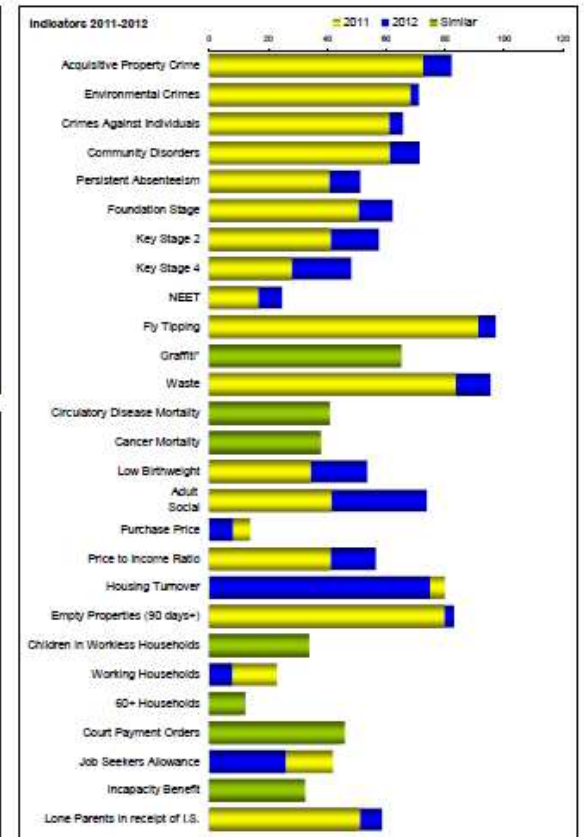
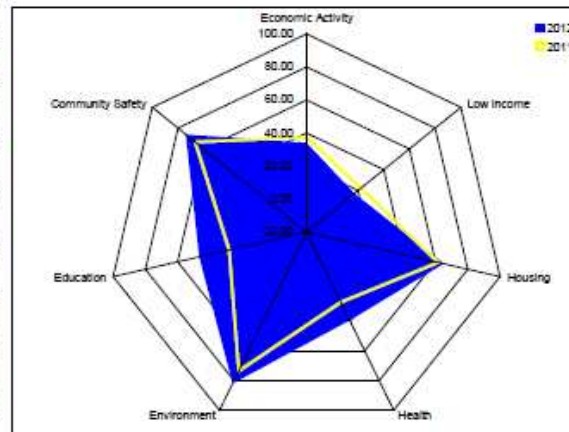
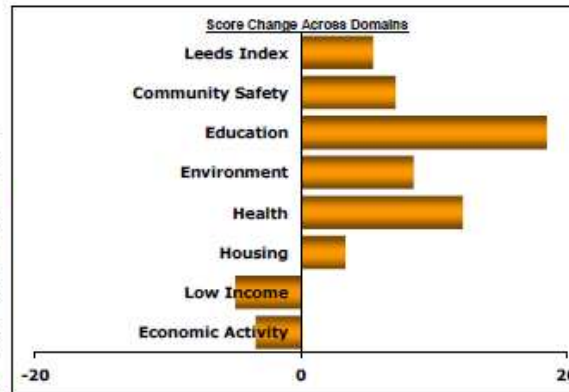


Leeds Neighbourhood Index

E02002369: Fearnville, Hollin Park, Beechwood, Brooklands

Domain Summary	2011		2012		Change	
	Rank	Score	Rank	Score	Rank	Score
Economic Activity	20	37.46	19	34.06	-1	-3.40
Low Income	18	22.10	18	17.18	2	-4.92
Housing	42	61.71	34	65.06	-8	3.34
Health	11	27.19	19	39.38	8	12.18
Environment	24	73.54	27	82.01	3	8.47
Education	20	28.04	32	46.54	12	18.50
Community Safety	20	66.77	19	73.90	-1	7.13
Leeds Index	21	25.00	23	30.45	2	5.45

Indicators	2011		2012		Change	
	Data	Score	Data	Score	Data	Score
Job Seekers' Allowance	7.33%	41.87	9.02%	25.91	1.69	-15.96
Incapacity Benefit	9.59%	32.36	9.69%	31.55	0.10	-0.81
Lone Parent Income Support	3.73%	50.96	3.18%	59.47	-0.57	7.52
Children in Workless Households	509	33.59	508	33.73	-1	0.13
Households Receiving In-Work Benefits	220	22.88	261	7.75	41	-15.13
60+ Households in Receipt of Benefits	544	10.68	536	12.13	-8	1.47
Court Payment Orders	322	45.80	332	43.89	10	-1.91
Average Purchase Price	£127,978	13.91	£107,293	8.06	-£20,685	-5.83
Price / Income Ratio	5.95	41.04	6.99	56.57	1.04	15.52
Housing Turnover	11.36%	79.88	13.24%	74.82	1.85	-5.06
Empty Homes (90+ days)	6.10%	79.59	5.47%	82.99	-0.63	3.40
Circulatory Disease Mortality	138.48	40.66	138.28	40.78	-0.20	0.10
Cancer Mortality	157.81	37.96	159.03	37.17	1.22	-0.89
Low Birthweight	9.76	34.30	7.78	53.51	-2.0	19.21
Adult Social Care	146	41.34	88	73.74	-58	32.40
Fly Tipping	45	91.18	19	97.14	-26	5.96
Graffiti*	46	64.95	46	64.95	*	*
Waste Issues	55	83.60	17	95.36	-38	11.76
Persistent Absenteeism	12.24%	40.53	10.14%	51.23	-2.10	10.71
Foundation Stage	47.06%	50.54	55.86%	62.29	8.62	11.76
Key Stage 2	60.92%	41.01	70.21%	57.48	9.29	16.47
Key Stage 4	34.26%	27.91	48.51%	48.22	14.25	20.31
NEET	13.77%	16.53	12.44%	24.74	-1.33	8.20
Acquisitive Property Crime	480	72.43	328	82.24	-152	9.81
Environmental Crimes	168	66.08	154	71.06	-14	2.98
Crimes Against Individuals	357	60.83	316	65.76	-41	4.93
Community Disorders	742	61.00	577	71.28	-165	10.28



Notes:

* Due to changes in the service, small area data on the number of graffiti jobs cleared by the Council is not available for 2011/12. To maintain the integrity of the Neighbourhood Index the data for 2010/11 has been rolled forward into the system so the change appears as zero.

Domain Summary: Shows the rank, score and changes for each domain, for each year.

Indicators: Shows the score, underlying data and changes for each indicator, for each year.

Bar Chart (Score Change Across Domains): A graphical representation of the change in the domain scores between this year and last. N.B. an increase in score indicates improvement, a decrease in score indicates deterioration.

Bar Chart (Indicators 2011-2012): A graphical representation comparing the indicator scores for each year. N.B. indicators showing minimal change are represented by green bars.

Spidergram: A graphical representation comparing the domain scores for each year.

Pie Charts: Graphical representations of the weighted proportions of individual indicators falling into each band.

